



Colorize

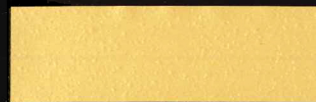
your stove pipe, wood, pellet, or gas heating appliance with Stove Bright® high temperature paint 1200°F/650°C



1990 SATIN BLACK



6198 FOREST GREEN



6302 METALLIC GOLD



6319 MOJAVE RED



6146 LEATHER BROWN



6199 REDWOOD



6304 FLAT BLACK



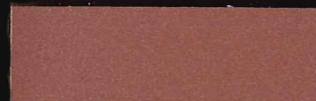
6320 COPPER



6159 METALLIC BROWN



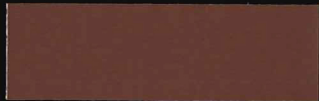
6201 CHARCOAL



6306 HIGH HEAT PRIMER



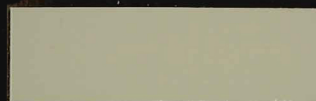
6321 PEWTER



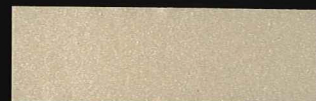
6192 RUSSET



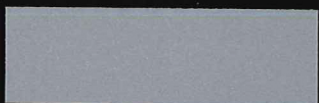
6223 EMERALD GREEN METALLIC



6307 SAND



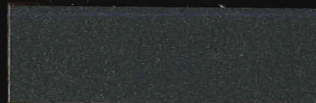
6324 SUNSET



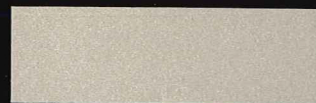
6193 METALLIC GRAY



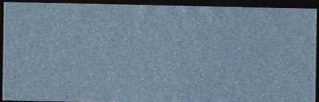
6224 ADOBE TAN



6309 METALLIC BLACK



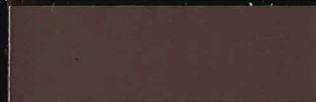
6325 SURF SAND



6194 SKY BLUE



6230 GOLDENFIRE BROWN



6310 BARK BROWN



6327 GREEN ILLUSION



6195 MAHOGANY METALLIC



6265 SILVER



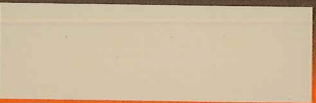
6311 HONEY GLO BROWN



6329 SHIMMERING ROSE



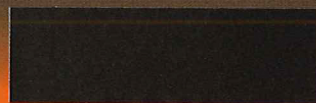
6196 METALLIC BLUE



6283 ALMOND



6313 MAUVE



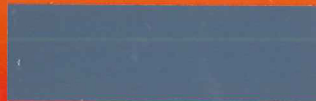
6332 NEW BRONZE



6197 MOSS GREEN METALLIC



6298 RICH BROWN METALLIC



6318 PATRIOT BLUE



VENT PIPE PAINT

Available to you is The Stove Bright® User Guide. The User Guide provides details about surface preparation, application, and your first burn.

Find the User Guide before you start your project at:

- www.stovebright.com
- 800-537-7201
- info@forrestpaint.com

Actual paint and color chips may vary slightly from this printed representation.

Visit our Stove Bright® "How to Videos" at: www.youtube.com/user/MrStoveBright